



BLENDED LEARNING, RPL AND NEW LITERACY FOR ADOPTING 21th GLOBAL DIGITAL COMPETITIVENESS

Dr. Paristiyanti Nurwardani
Director of Learning

THE MINISTRY OF RESEARCH TECHNOLOGY AND HIGHER EDUCATION (MORTHE)
THE REPUBLIC OF INDONESIA

Copyright © IA-MA, 2018, Direktorat Jenderal Pembelajaran dan Kemahasiswaan, Kemendikristekdikti



The Ministry of Research Technology and Higher Education (MoRTHE)
Vision & Mission

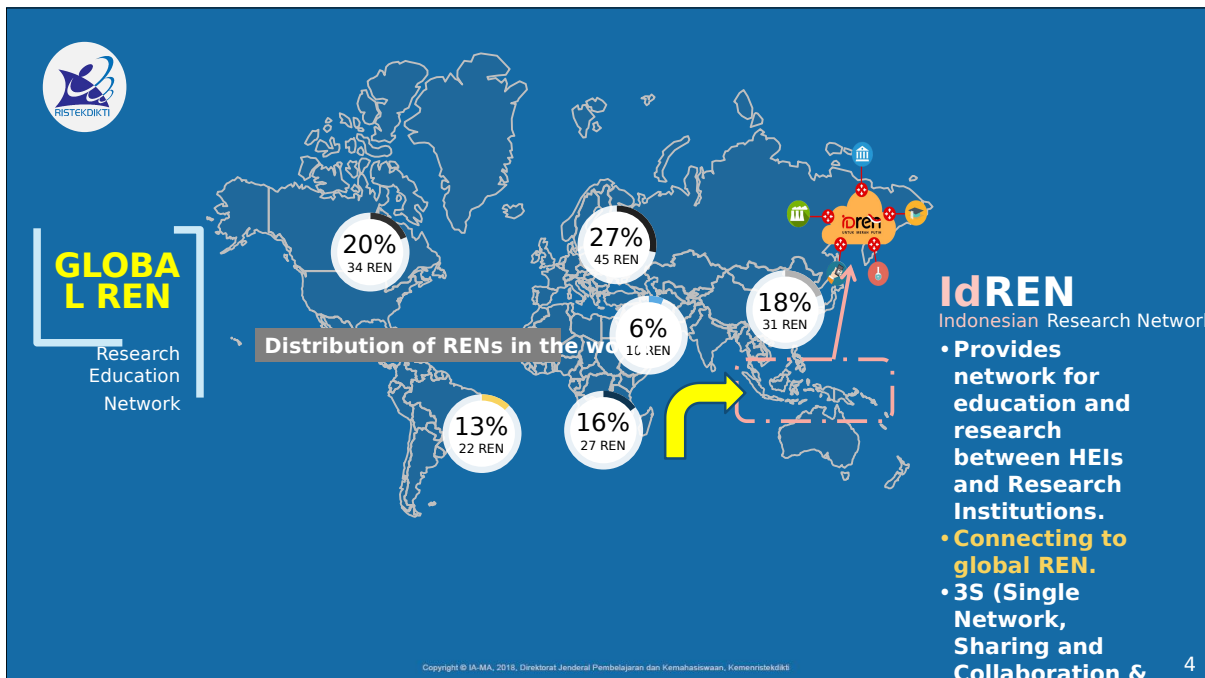
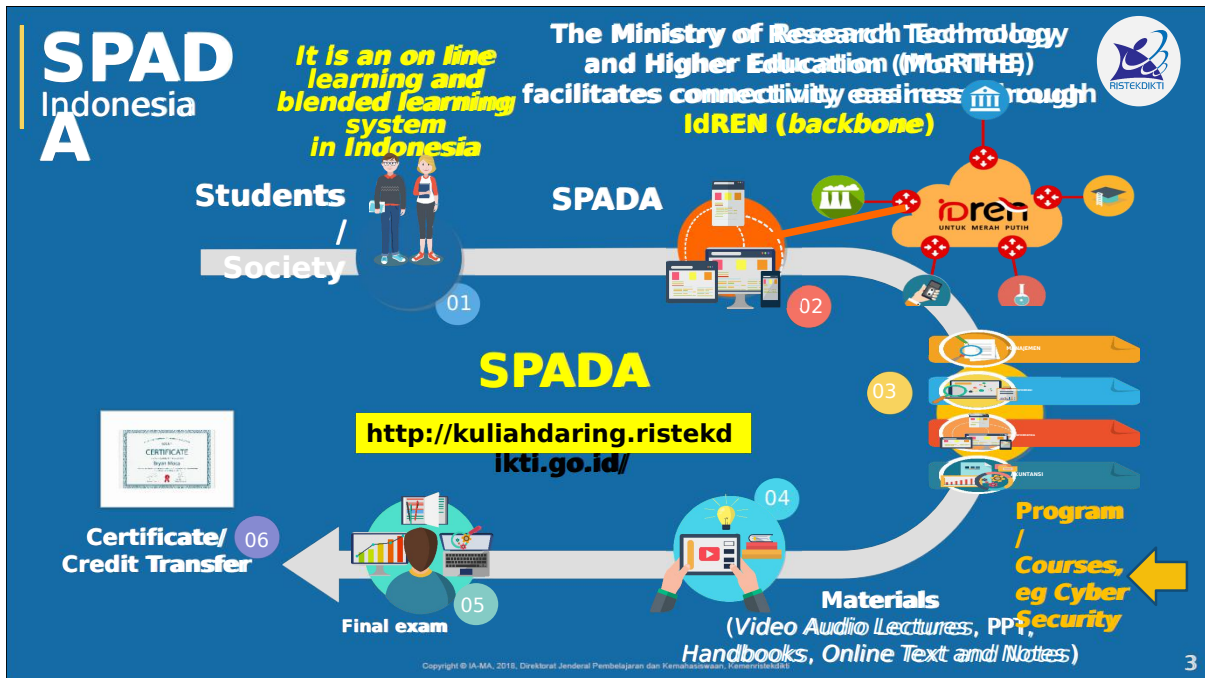
Vision

- Support national competitiveness through **creation of higher quality education** combined with science & technology, and innovation capability.

Missions

- Improve access, relevancy, and quality of higher education to produce qualified human resource; and
- Improve innovation and science & technology capability to add value of their product.

Copyright © IA-MA, 2018, Direktorat Jenderal Pembelajaran dan Kemahasiswaan, Kemendikristekdikti





Recognition of Prior Learning (RPL)

RPL (Recognition of Prior Learning) is a recognition of an individual's Learning Outcomes that are obtained through formal or non formal or informal, and/or work experience on higher education levels, starting from level 2 of IQF or Diploma 1 Program up to level 9 of IQF (Doctoral Program).

Minister of Research, Technology and Higher Education's Regulation No. 26 of 2016,
 2 (two) types of RPL:
 A. RPL to continue **formal education (Type A)**; and
 B. RPL to obtain a **recognition of equality on certain level of IQF (Type B)**.

RPL (A) Output  **Degree Certificate**

RPL to recognize partial credits higher education (HE) institutions continue to obtain

DEGREE CERTIFICATE/DIPLOMA

RPL (B) Output  **A Decree of Equivalence**

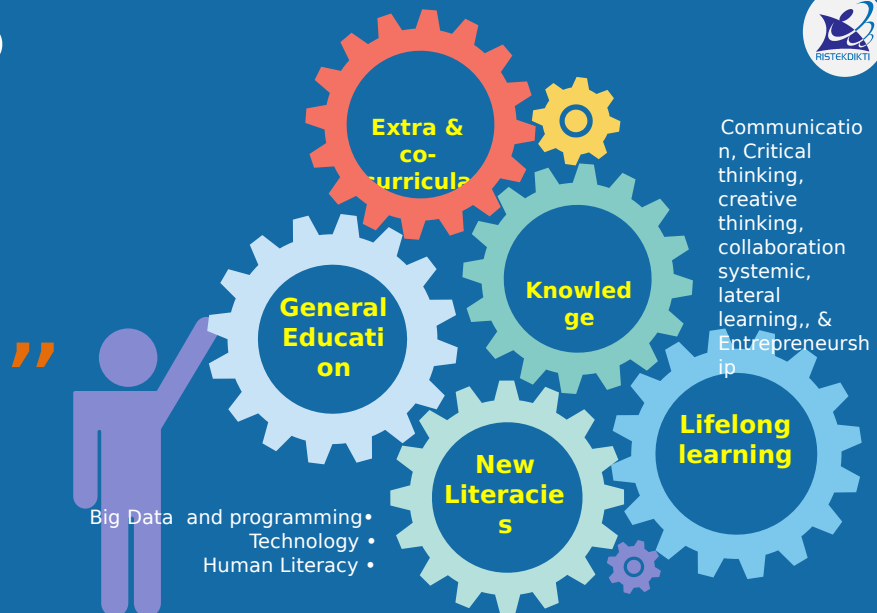
RPL to obtain a recognition of equality on certain level of IQF obtain a **DECREE of EQUIVALENCE**

*The implementation of RPL on higher education should be held in the context of **quality development and higher education relevance on ly**. It has to meet **the National Standard of Higher Education***

Copyright © IA-MA, 2018, Direktorat Jenderal Pembelajaran dan Kemahasiswaan, Kemendikbud

GEN-RI 4.0

General Education



Copyright © IA-MA, 2018, Direktorat Jenderal Pembelajaran dan Kemahasiswaan, Kemendikbud

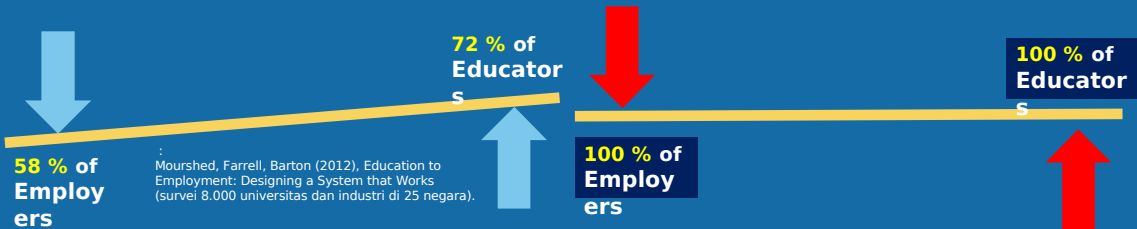


Indonesia Competitiveness

36/137
2017
(WEF, 2017)



31/137
2019



THANK YOU

